

# Shane M. Izzo

5300 Silver Leaf Lane • Sarasota, FL 34233 • 941-922-3108 (Office) • 941-350-3899 (Cell)  
Shane@CADwerks.us • www.CADwerks.us

## OBJECTIVE:

We are searching for clients that are looking to be the best in their industry and willing to do what it takes to stay ahead of the competition. We prefer working with companies willing to keep an open mind on new ideas coming into the market and willing to accept new challenges that can save their business and clients' time and money on a project. In addition to the implementation of new ideas, there must also be a desire to continually provide a product that resonates quality to the client. These same beliefs between client & sub-contractor give everyone the advantage to stay ahead and crucial to both parties for a winning strategy.

## EXPERIENCE:

### **CADwerks, Inc.** **President**

**Sarasota, Florida**  
**August 2008 to Current**

- President & Founder of CADwerks, Inc. Opened in August 2008.
- Provide services to the professionals in our industry (Engineers, Architects, Etc.) that need a local company to outsource their projects too.
- Offer all services related to the CAD Industry. Services include; Consultation, Department Setup, Design, 2D Drafting, Color Rendering, 3D Modeling, Design Visualization & Animation.

### **Frank Menke Organization** **Senior Designer & CAD Manager**

**Sarasota, Florida**  
**March 2004 to August 2008 (Closed in 2009)**

- Managed & maintained the Design Department as CAD Manager. Collectively cataloged & organized all project CAD files, Set all CAD Standards for the firm and managed a department head of 4 out of 32 within the organization.
- As Senior Design Manager, I Was responsible for all site designs and layouts for developmental projects. These designs needed to capture 3 essential elements; **1.)** Maximize investment dollars. **2.)** Easily accessible to traffic **3.)** Aesthetically pleasing to the eye.
- Projects varied in size from simple residential projects to large multi-billion dollar mixed use conglomerations including Residential Developments, Commercial/Retail Developments & Site Infrastructure such as Roadways, Hospitals, Schools & Factories.

### **Barrington Engineering Consultants** **AutoCAD Draftsman**

**Barrington, Illinois**  
**June 1999 to March 2004 (Closed in 2009)**

- Prepared working plans and detailed drawings from rough or detailed sketches and notes for engineering and architectural purposes, according to dimensional specifications.
- Drafted detailed construction drawings, such as ALTA's, plat of survey's, topographical drawings, and related maps and specifications used in planning and construction of civil engineering projects, such as residential & commercial real estate development projects.
- Identified problems, diagnosed causes and determined corrective actions.
- Was instrumental in setting up office with all AutoCAD standards and conveniences.
- Personally prepared and processed more than 180 Surveys each month during the busy season.

## EDUCATION:

**Autodesk University**  
**Avatech Solutions**  
**Harper College**  
**DePaul University**  
**College of Lake County**

**Las Vegas, Nevada**  
**Tampa, Florida**  
**Palatine, Illinois**  
**Chicago, Illinois**  
**Grayslake, Illinois**

**Continuing Education**  
**Autodesk Certification**  
**CAD Certification & Training**  
**Marketing & Sales**  
**Business Management**

**Annually**  
**Annually**  
**1998 - 1999**  
**1995 - 1997**  
**1993 - 1995**

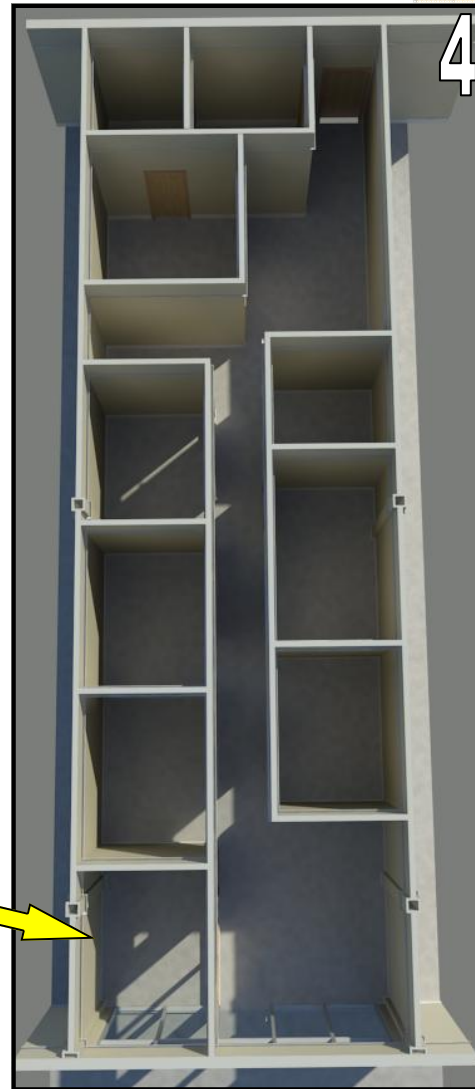
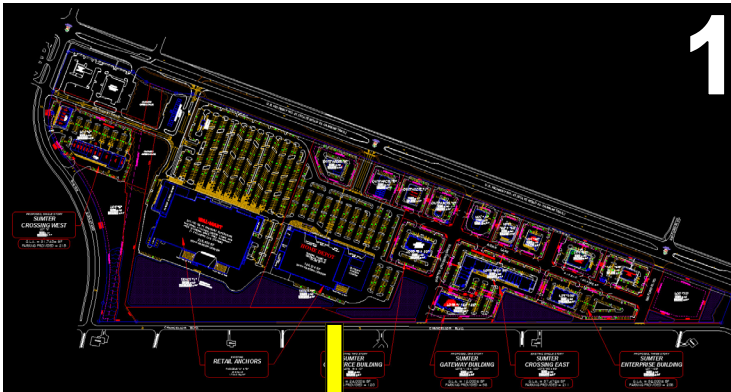
### HIGHLIGHTS:

- Master AutoCAD Certified. I use the most current versions of Autodesk software such as; AutoCAD, AutoCAD Architecture, AutoCAD MEP, AutoCAD Structural Detailing, Revit Architecture, Revit MEP, Revit Structure, 3ds Max Design, Inventor, Navisworks, Showcase, Sketchbook Designer, Impression, Autodesk Image Modeler & Autodesk Stitcher Unlimited. Also fluent in a host of other programs such as the latest releases of all Microsoft Office Professional applications & Adobe Design Premium suite.
- Personally, I own all of my software and I am an annual subscription member to all Autodesk software. This is a saving of nearly \$1,500 a year (Just for subscriptions) to the client for the need to purchase any additional software.
- A contributing member of **SIGGRAPH** (Special Interest Group on Computer Graphics and Interactive Techniques), **AUGI** (Autodesk User Group International), **AU** (Autodesk University) and a product evaluator for Autodesk before the new releases of AutoCAD and Revit are released. Some of my recommendations have made it into the 2009 & Newest versions of AutoCAD software.



### SAMPLE "DEVELOPMENT" PROJECT:

1.) Projects usually begin with a 2D design plan that the developer has agreed to. 2.) Then it is rendered in color over an aerial view. 3.) Depending on priority level, different parts are then modeled in 3D according to the architects or the developers plan. 4.) Finally, if a potential client is interested in a particular unit, I will model the unit for them with all furniture and details according to the clients request.



NEW RELEASES